

HOROLOGICAL TOUR OF PHILADELPHIA

by James W. Gibbs

(Part Two)

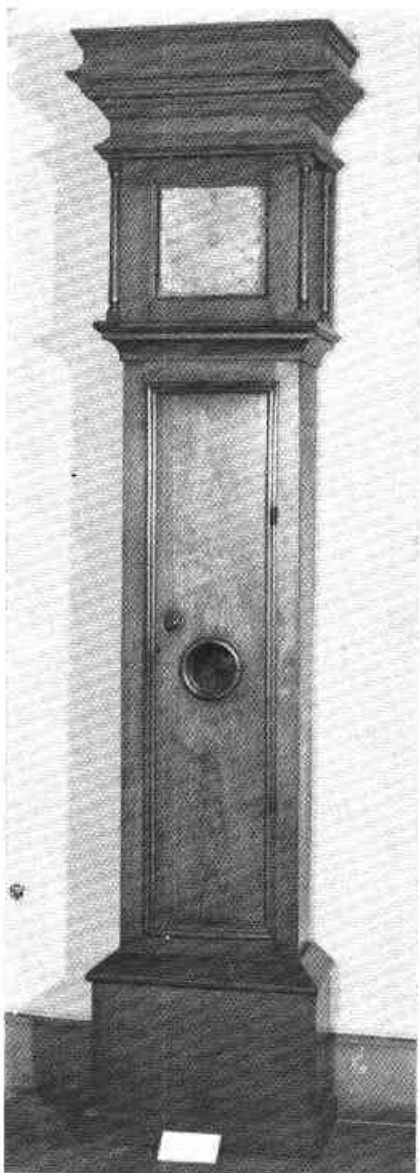
For "delegates" to the Silver Anniversary Convention of our Association who want to see important clocks, watches and watch papers in a concentrated area and who wish to spend all their money in the Mart, we suggest Tour Two. Take a taxi to the Historical Society of Pennsylvania at Thirteenth and Locust Streets, which is open Tuesday through Friday from 9 to 5 and 1 to 5 on Mondays (Not open Saturday or Sunday). Several superb long case clocks, as well as watches and watch papers, await your inspection.

HSP 1, 2, and 3 illustrate a tall case clock by one of Pennsylvania's earliest clockmakers, Peter Stretch. The case is of mahogany, and is 96" tall by 19" wide by 10" deep. The brass dial is 8½" in diameter with a 1¾" chapter ring. The cherub spandrels bespeak Stretch's English birth and the still loyal colonies. The unusually long door features a 4" diameter peep-glass and a wood latch. It has a one-day pull-up striking movement. Quaker Peter Stretch, born and apprenticed in Leek, England, came to Philadelphia in 1702 and rapidly acquired substance and became a factor in the social and political life of the city. His clocks employed only one hand until about 1710 and remained flat-topped until about 1720, so it is apparent that this specimen is an early one.

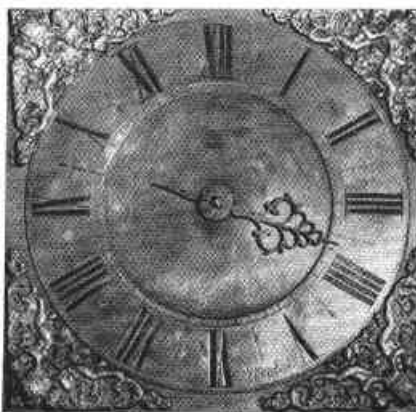
HSP 4, 5, and 6 illustrate a tall case clock by G. Miller. The case is of walnut, 92" tall by 18" wide by 10" deep. Notice the extremely elaborate finials combining two decorative features usually used separately

and the splendid rosettes on the broken arch. This clock is *circa* 1771, so the arched metal dial with maker's name insert is typical. This also is a one-day pull-up striking movement. This Germantown maker may have been influenced by Christopher Witt and the Pietist movement in general.

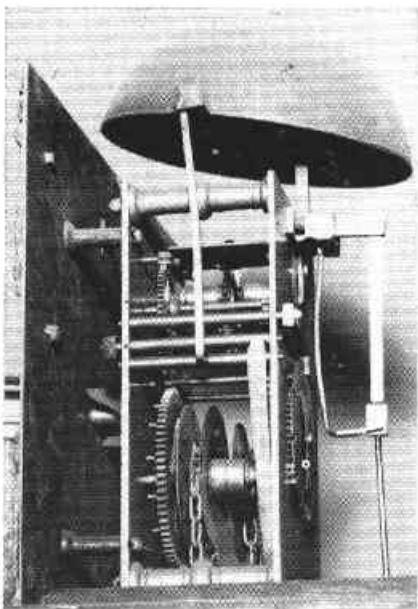
HSP 7, 8, 9, 10 and 11 illustrate a clock attributed to Jacob Godshalk, Towamencin, Montgomery County, Pa., (and very near to where Rittenhouse worked earlier and Jacob Custer later) but in fact it presents some mysteries. Whereas the first two clocks and the rest discussed have brass movements, this one has brass wheels between wood plates, which suggests that it was originally a wag-on-the-wall which was later cased; at least the movement and case are not mates. Furthermore, on the wood back plate is written the name *Joseph Hülzenger 1727*. No such maker is listed but Palmer does mention a Hilsinger clock with dial and movement resembling a tall clock, but with plates of wood and gears and axles of metal, which hung on a wall, hence a "wag." Godshalk was at work in Towamencin prior to the Revolutionary War when he moved to Philadelphia. Usually Towamencin clocks have English-style spandrels and this dial obviously once had spandrels which might have been removed in protest by a Patriot owner. The walnut case is 88" tall by 16" wide by 8" deep. The brass face is 10" in diameter with a 2½" chapter ring. The mystery is further heightened by the twelve-pointed star decoration, the nineteen ¼" dia-



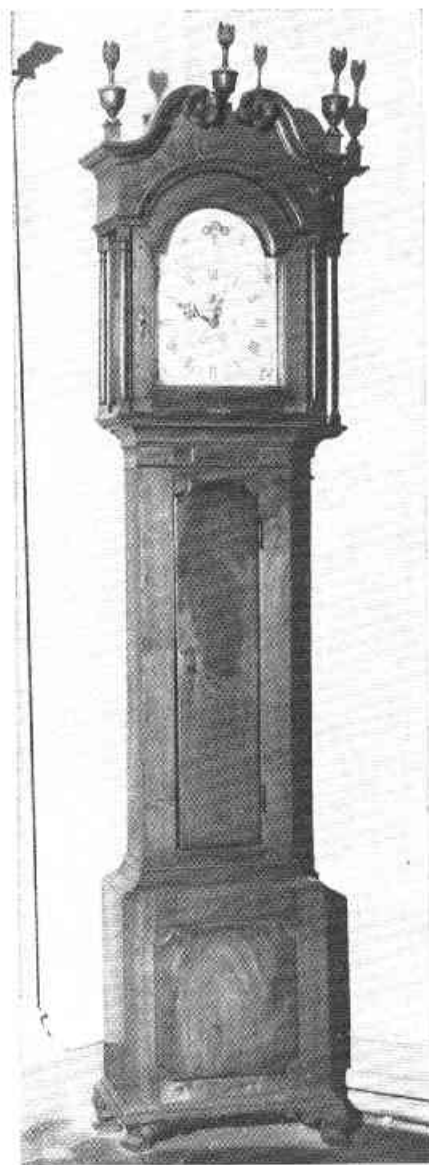
HSP 1 The Peter Stretch clock — Historical Society of Pennsylvania



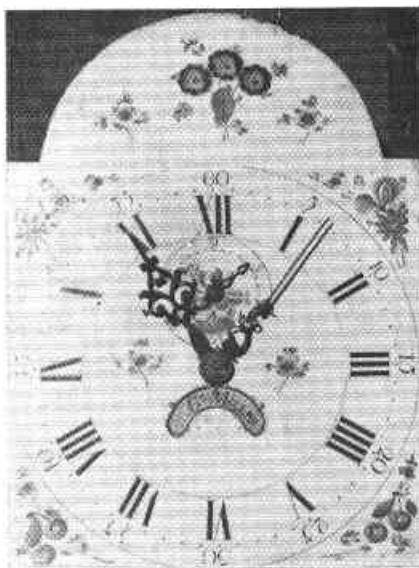
HSP 2 Dial of Peter Stretch clock



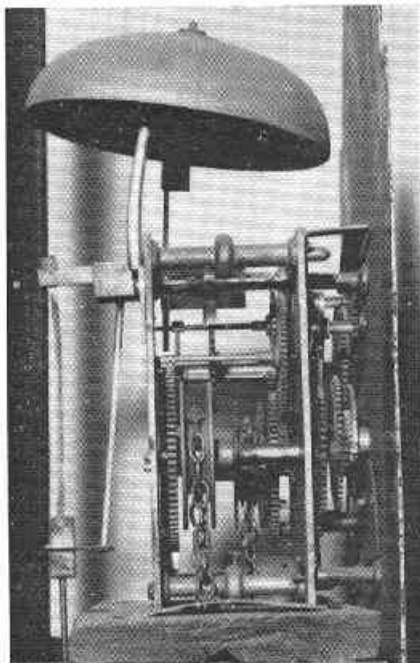
HSP 3 Siriko-side of movement of Peter Stretch clock



HSP 4 Clock by G. Miller — Historical Society of Pennsylvania



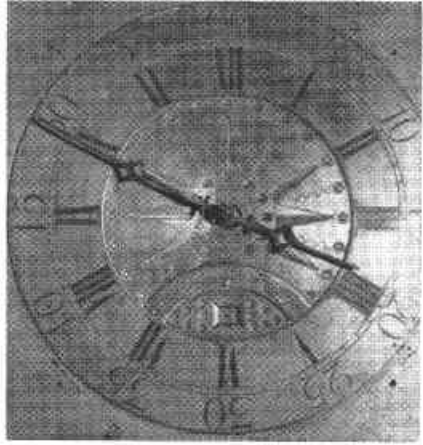
HSP 5 Dial of G. Miller Clock



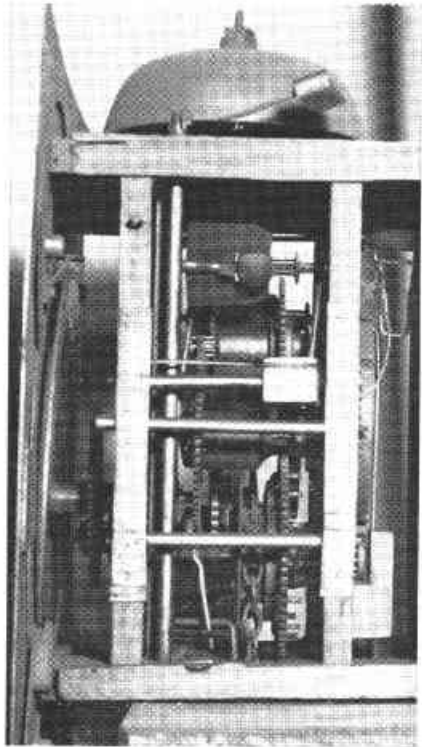
HSP 6 Strike-side of movement of G. Miller clock



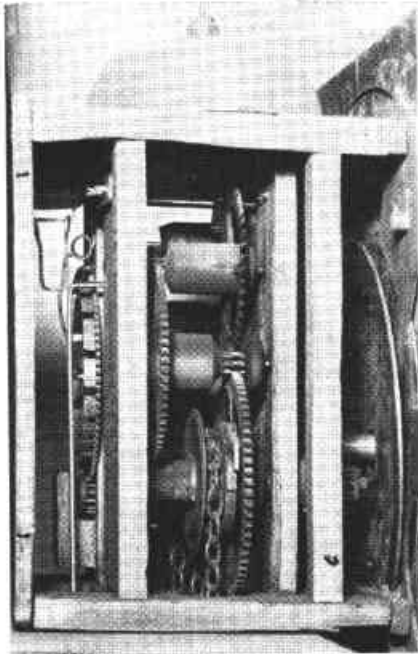
HSP 7 Jacob Godschalk clock — Historical Society of Pennsylvania



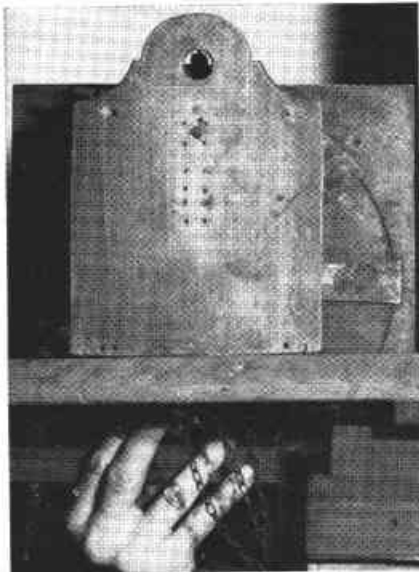
HSP 8 Dial of Jacob Godschalk clock



HSP 9 Strike-side of Godschalk clock



HSP 10 Time-side of Godschalk clock



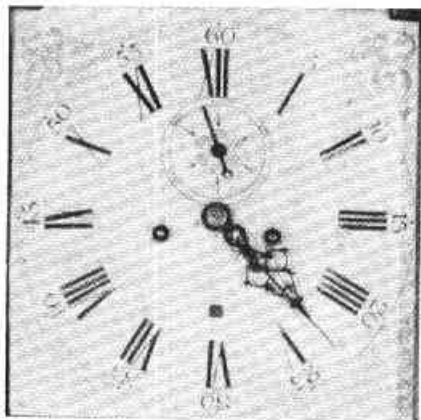
HSP 11 Back-board of Godschalk clock

meter circles outside the star and the six similar circles on either side of the calendar orifice. Although the weight is missing this was also a one-day pull-up striking movement.

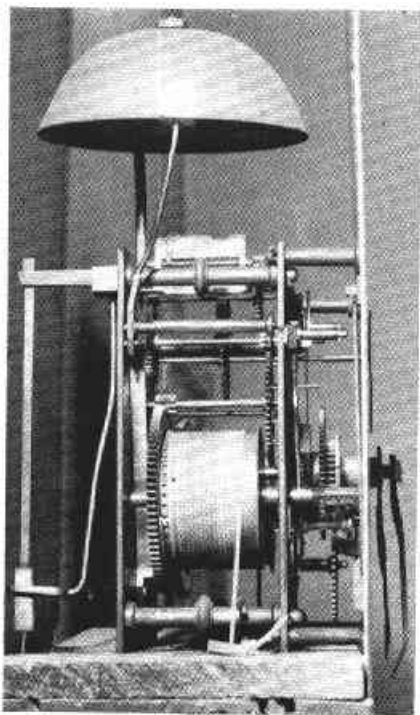
HSP 12, 13, and 14 illustrate a tall case clock by Joseph Kinhead Stone of Christiana, Delaware; case by John Erwin. Neither is listed but records would date this clock about 1800. The case is of very light walnut, 90" tall by 18" wide by 10" deep. It has an eight-day time and striking movement with a tiny calendar aperture. For some reason HSP 12 does not reveal a nautical painting in the arch.

HSP 15, 16, and 17 illustrate a handsome but unsigned eight-day clock with strike on 1/2-hour and hour. It has the historical significance of having been owned by Chief Justice Cyrus Griffin, the last President of the Continental Congress under General George Washington. It is a large mahogany case 96" tall by 20" wide by 10" deep with a brass dial and spandrels and silver chapter ring. A moon phase indicator tops off the generally elegant appearance which also includes a small calendar aperture.

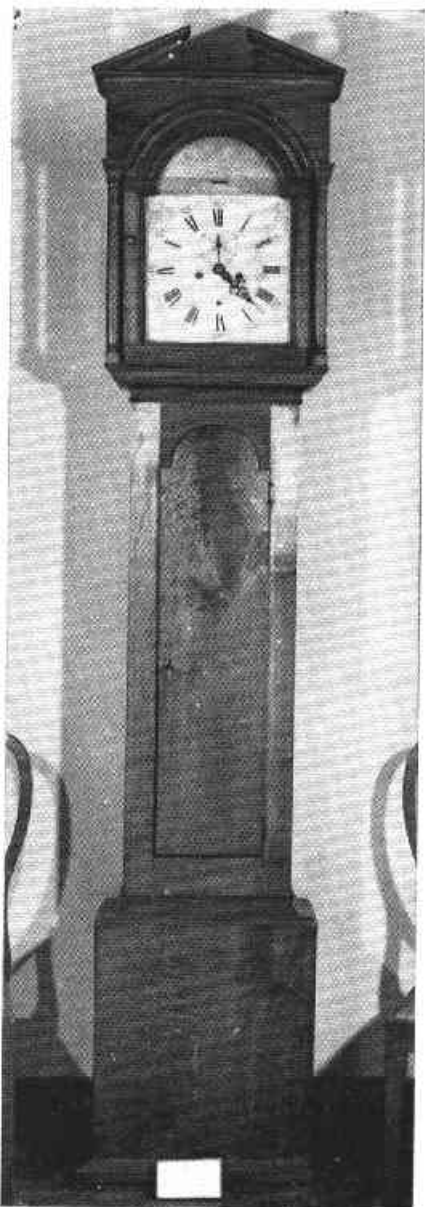
HSP 18, 19, and 20 illustrate a clock which has the complete family pedigree we always wish were known about any of our prize clocks. The dial clearly indicates the name Thomas Lindsay, Frankford (Penna.), who was at work *circa* 1810. However, the pedigree attests that the brass works were imported from England for twenty pounds, presumably shortly after 1763. It also states that the mahogany case was made in Frankford, Penna. The deduction is that for the first forty or forty-five years of its life the clock hung as a wagon-the-wall or was otherwise cased until it was installed in the Lindsay case. Now, is the dial the original to which Lindsay added his name or did he substitute a new dial? Perhaps the latter. He may even have added the calendar and moon phase although the pedigree does not so state. You be the judge when you see it.



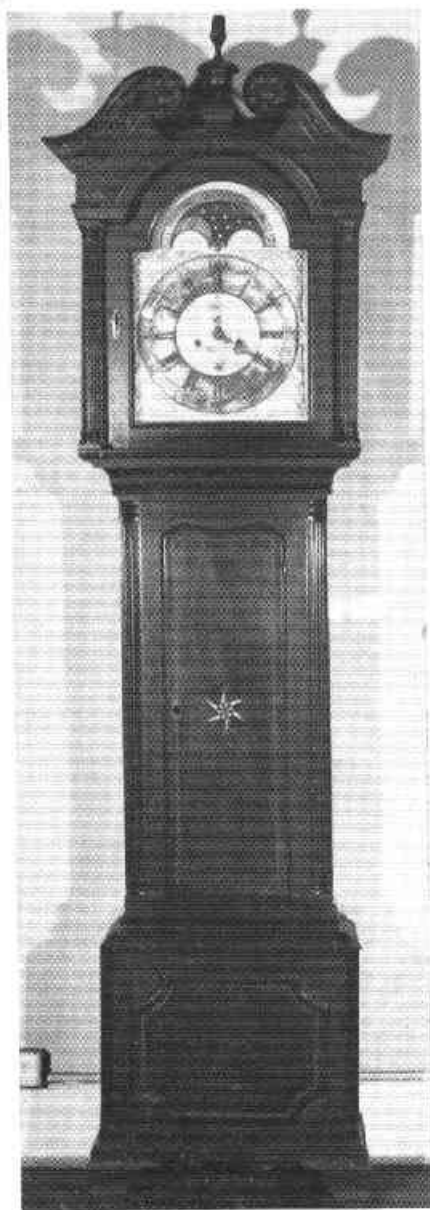
HSP 13 Dial of Stone clock



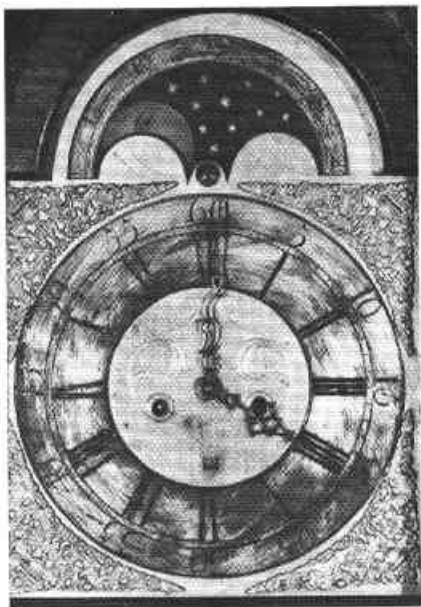
HSP 14 Strike-side of movement of Stone clock



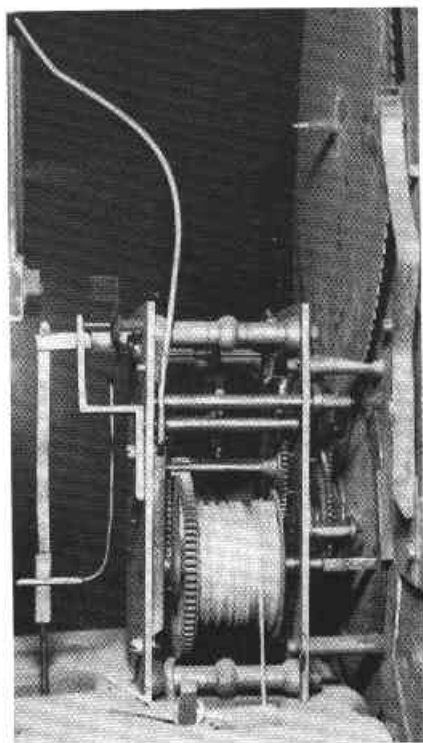
HSP 12 Clock by Joseph Kinhead Stone; case by John Erwin — Historical Society of Pennsylvania



HSP 15 Unsigned eight-day clock — Historical Society of Pennsylvania



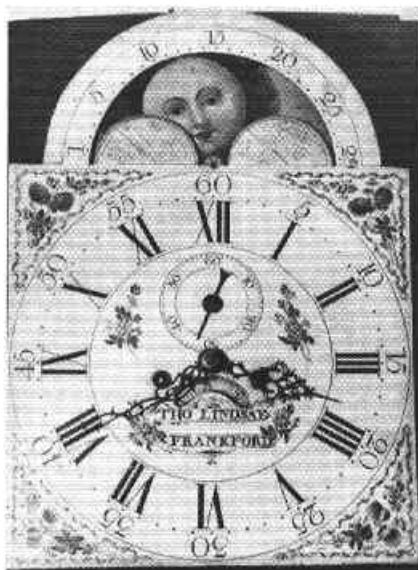
HSP 16 Dial of clock in HSP 15



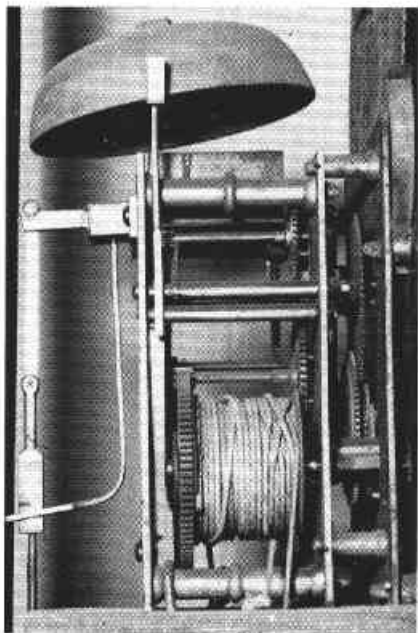
HSP 17 View of movement of clock in HSP 15



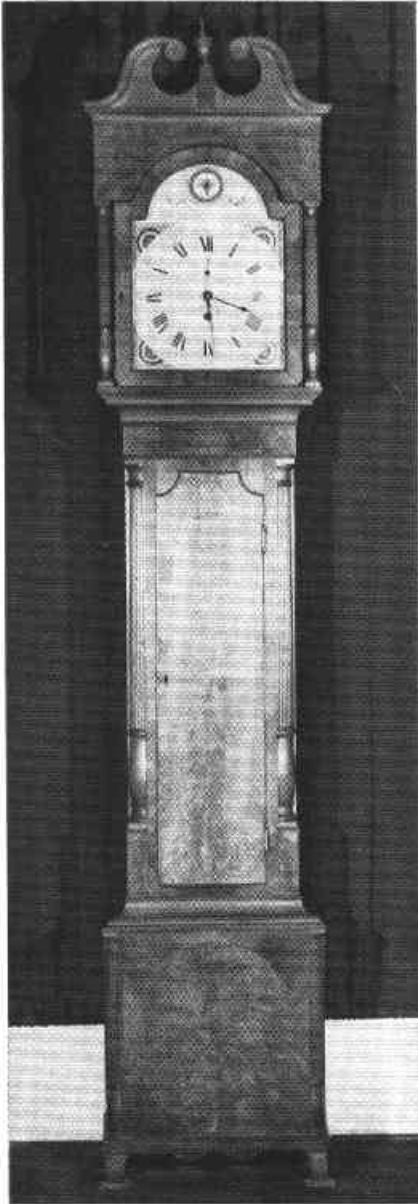
HSP 18 Clock by Thomas Lindsay — Historical Society of Pennsylvania



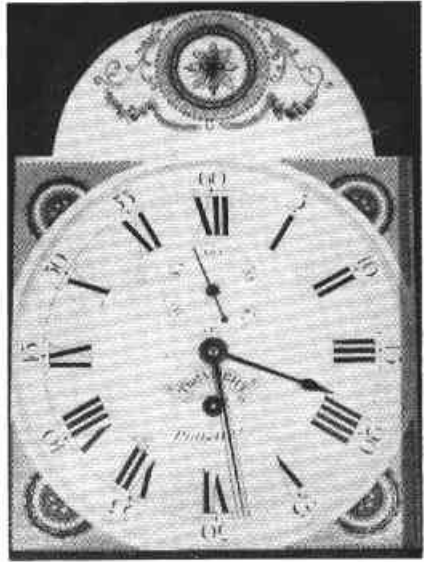
HSP 19 Dial of Thomas Lindsay clock



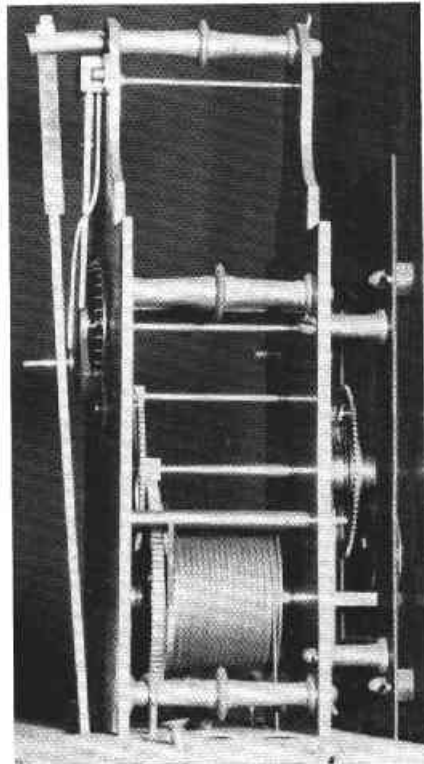
HSP 20 View of movement in Thomas Lindsay clock



HSP 21 Clock by Thomas Voight — Historical Society of Pennsylvania



HSP 22 Dial of Thomas Voight clock



HSP 23 View of movement in Thomas Voight clock